

Light is OSRAM

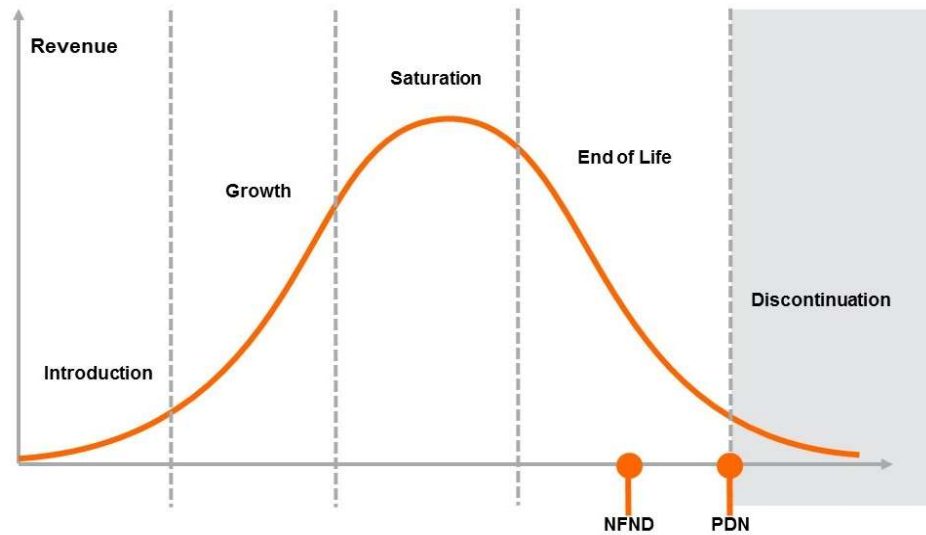
## Product Or Individual Q-Code Discontinuation OS-PDN-2021-063

15 June 2021

---

|                       |                       |
|-----------------------|-----------------------|
| <b>Last order:</b>    | <b>15 July 2021</b>   |
| <b>Last delivery:</b> | <b>15 August 2021</b> |

---



Please direct your feedback to your local Sales office.

| DISCONTINUED        |               |                 |                            | NEW (REPLACEMENT) |                         |       |
|---------------------|---------------|-----------------|----------------------------|-------------------|-------------------------|-------|
| Device              | Ordering Code | Brand           | Reason for discontinuation | Device            | Datasheet Ordering Code | Brand |
| <b>BLB A601</b>     | <b>all</b>    |                 |                            |                   |                         |       |
| BLB A601            | Q62703Q4701   | Optical Element | Final clearance            | n/a               | No replacement          |       |
| <b>BLO AB001</b>    | <b>all</b>    |                 |                            |                   |                         |       |
| BLO AB001           | Q65110A4382   | Optical Element | Final clearance            | n/a               | No replacement          |       |
| <b>BLY GB002</b>    | <b>all</b>    |                 |                            |                   |                         |       |
| BLY GB002           | Q65110A7327   | Optical Element | Final clearance            | n/a               | No replacement          |       |
| <b>BLBCGM AF003</b> | <b>all</b>    |                 |                            |                   |                         |       |
| BLBCGM AF003        | Q65110A8583   | Optical Element | Final clearance            | n/a               | No replacement          |       |
| <b>BLBCGM AF004</b> | <b>all</b>    |                 |                            |                   |                         |       |
| BLBCGM AF004        | Q65110A8581   | Optical Element | Final clearance            | n/a               | No replacement          |       |
| <b>BLO EF002</b>    | <b>all</b>    |                 |                            |                   |                         |       |
| BLO EF002           | Q65110A8905   | Optical Element | Final clearance            | n/a               | No replacement          |       |
| <b>BLS E6002</b>    | <b>all</b>    |                 |                            |                   |                         |       |
| BLS E6002           | Q65110A8906   | Optical Element | Final clearance            | n/a               | No replacement          |       |
| <b>BLW AG001</b>    | <b>all</b>    |                 |                            |                   |                         |       |
| BLW AG001           | Q65111A0113   | Optical Element | Final clearance            | n/a               | No replacement          |       |
| <b>BLW G6003</b>    | <b>all</b>    |                 |                            |                   |                         |       |
| BLW G6003           | Q65111A0927   | Optical Element | Final clearance            | n/a               | No replacement          |       |
| <b>ALP A0001</b>    | <b>all</b>    |                 |                            |                   |                         |       |
| ALP A0001           | Q62703Q6163   | Optical Element | Final clearance            | n/a               | No replacement          |       |
| <b>BLP T6003</b>    | <b>all</b>    |                 |                            |                   |                         |       |
| BLP T6003           | Q65110A7275   | Optical Element | Final clearance            | n/a               | No replacement          |       |
| <b>BLW T6002</b>    | <b>all</b>    |                 |                            |                   |                         |       |
| BLW T6002           | Q65110A8582   | Optical Element | Final clearance            | n/a               | No replacement          |       |